

FileMaker 17 Platform

Develop

Group Objects

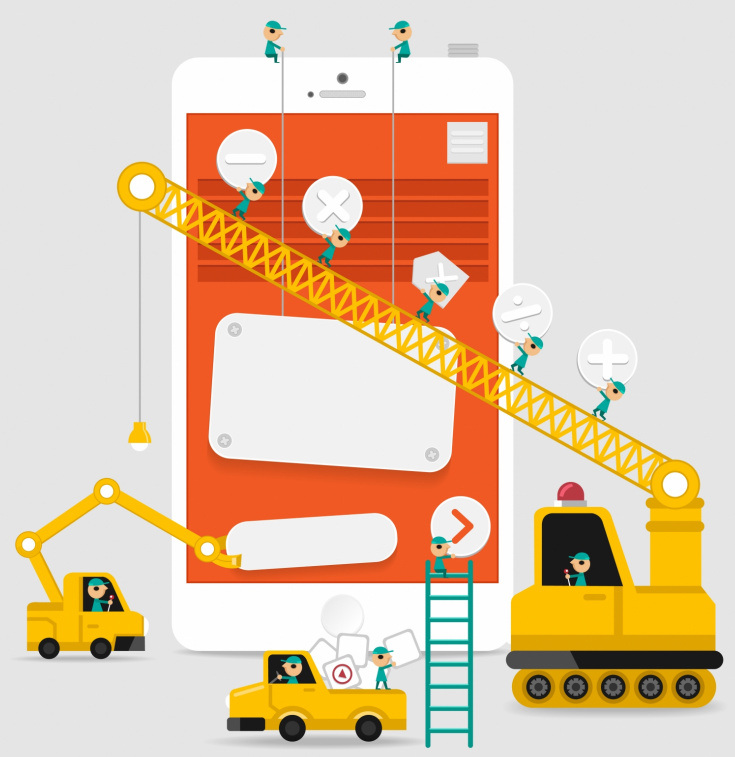
Conveniently edit objects within a group without having to ungroup all of the objects first.

Scripts

Spontaneously create variables for Custom Dialog input fields. You no longer need to create global fields just to capture a user's response.

Default Fields

Pre-configure custom fields when a new table is created while FileMaker 17 accordingly adds fields for primary key, creation/modification dates and the user who created/modified records.



Design



Redesigned Layout Mode

FileMaker 17 docks your important layout pallet in your layout window so the tools stay in place as you move from wide screens to small screens.



Found Set Based Portals

Easily support conventional UI/UX functions like master-detail layouts that display data within data and make record navigation more modern and intuitive.

Deliver



eMails and Exports

Attach multiple files to an email message and automatically create folders/directories during any file saving action.

Server

The FileMaker Server 17 Admin Console has been redesigned to reflect a standards-based, web-only administration interface that is dynamic, responsive and intuitive.

Data Migration Tool

Quickly transfer large data sets from one FileMaker file to another in a controlled manner and with little downtime.



Boston · New York · San Francisco · Los Angeles

Phone: (866) 940-8400

Email: info@supportgroup.com

Website: www.supportgroup.com

